

# Environmental Services

PS&S has worked on many of the region's most significant projects; where thousands of people live, work, get educated, shop and play. PS&S's goal is to help our clients get the most benefit from their sites, to achieve project objectives and maximize return on investment while complying with regulations using the most practical information, technology and strategy. We work with the project team from concept through project completion and post project care. This approach provides for the most efficient and complete project program. We attain these goals by developing a comprehensive understanding of sites and projects, and preparing value-adding strategies. We help with returning Brownfields Sites to beneficial uses, and create sustainable, resilient designs to promote our nation's prosperity, public health, and quality of life.



## Planning and Permitting

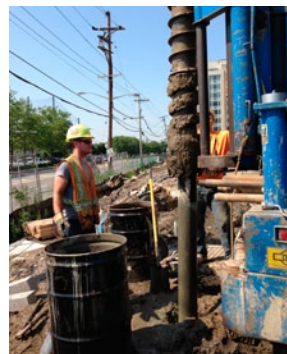
- NJDCA and local construction permit support
- Local, regional, state and federal permitting
- EA & EIS
- Freshwater wetlands
- CAFRA, Waterfront development
- NEPA
- Brownfield and Community Redevelopment
- NYS SEQRA
- Article VII of NYS Public Service Law

## Ecological Services

- Wetlands and critical area delineation
- Threatened and endangered species evaluation/surveys
- Habitat assessments
- Botanical inventory/tree survey
- Vernal pool investigation

## Remediation

- Site/remedial investigation
- Remedial action
- UST compliance
- DPCC, SPCC and SPPP services
- Vapor Intrusion
- Remediation construction observation
- Regulatory compliance
- LSRP and PE services
- Industrial Site Recovery Act compliance
- Brownfield program administration
- Waste management studies
- State and federal waste disposal support services
- Post-remediation site management



For more information on Environmental services, please contact  
**Miguel Salinas at [msalinas@psands.com](mailto:msalinas@psands.com) or 732.584.0435.**

# Environmental Services

*continued*

## Air Permitting & Compliance

- Local, Regional, State & Federal
- Title V Facility-wide Air Operating Permits
- Air Permit Compliance Assistance: monitoring, recordkeeping and reporting
- Atmospheric Dispersion Modeling / Air Quality Assessments / Health Risk Screening & Analyses

## Noise Assessments and Modeling

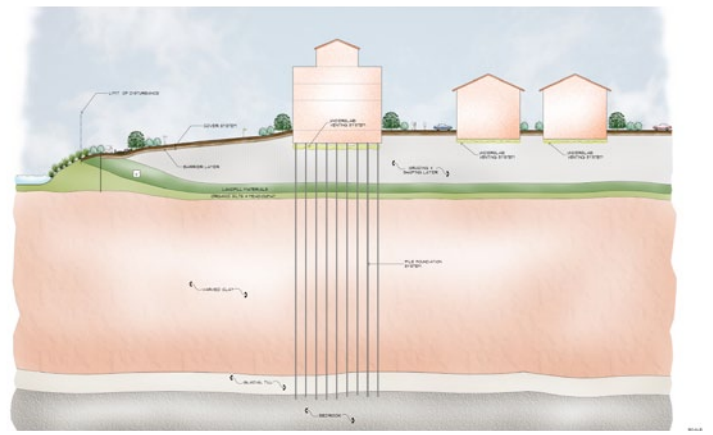
- Noise and Vibration Monitoring
- Sound Modeling & Impact Assessments
- Mitigation Evaluation and Implementation
- Expert Testimony

## GIS

- Linear project corridor mapping and analyses
- Natural resource inventories
- Environmental database preparation and web-based mapping tools
- Community outreach programs

## Hydrogeology

- Modeling
- Dewatering
- Pump tests and aquifer evaluations



## Cultural Resource Management

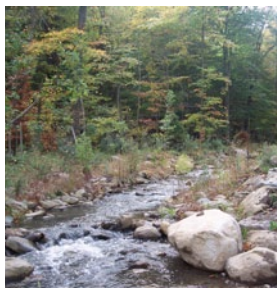
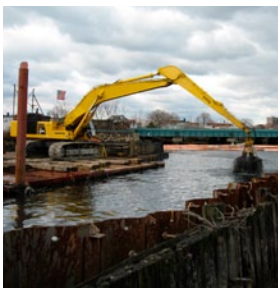
- Archaeological and historical investigations
- Rehabilitation consulting
- National Register of Historic Places evaluations

## Due Diligence

- Initial Project Evaluation
- ASTM Phase I and II Environmental Site Assessments
- NJ Preliminary Assessments (PA) and Site Investigation (SI)
- Linear Environmental Assessments

## Technical Support

- Civil, MEPF, Structural, Geotechnical, Water Resource Engineering
- Survey, Planning, Landscape Architecture and Architecture



For more information on Environmental services, please contact  
**Miguel Salinas at [msalinas@psands.com](mailto:msalinas@psands.com) or 732.584.0435.**